

CA5-FM/CP/RM

FM Yagi Antenna

88—108 MHz

KATHREIN

The KUSA CA5-FM/CP/RM is a ruggedly built yagi antenna, designed for professional FM transmit and receive applications.

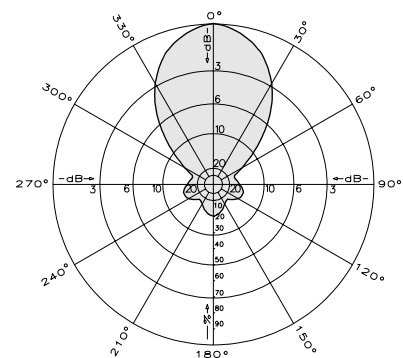
Like all KUSA antennas, the CA5-FM/CP/RM is made of the finest materials using state of the art electrical and mechanical designs resulting in superior performance and long service life.

The CA5-FM/CP/RM may be used stand alone or in stacked arrays for higher gain, increased side-lobe suppression, or custom azimuth patterns.

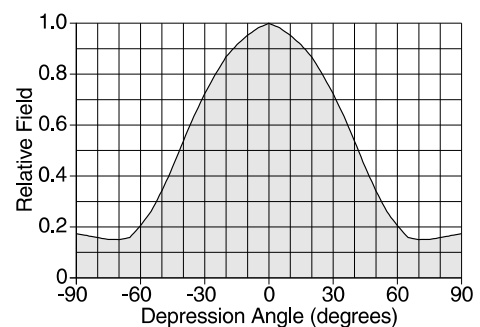


Specifications

Frequency range	Any specified FM channel 88 to 108 MHz
Gain	6 dBd
Power gain	3.98
Impedance	50 ohms
VSWR	<1.5:1
Polarization	Circular
Front-to-back ratio	>14 dB
Maximum input power	250 watts
H-plane beamwidth	61 degrees (half-power)
E-plane beamwidth	61 degrees (half-power)
Connector	N female
Weight	35 lb (15.9 kg)
Dimensions	79 x 56 x 50.8 inches maximum (2007 x 1422 x 1290 mm)
Wind load at 100 mph (161 kph)	
Front	98 lbf (436 N)
Wind survival rating*	120 mph (193 kph)
Shipping dimensions	84 x 13 x 8 inches (2134 x 330 x 203 mm)
Shipping weight	38 lb (17.2 kg)
Mounting	For masts of 2.375 inch (60 mm) OD.



Azimuth pattern (E-plane)



Elevation pattern (H-plane)

*Mechanical design is based on environmental conditions as stipulated in TIA-222-G-2 (December 2009) and/or ETS 300 019-1-4 which include the static mechanical load imposed on an antenna by wind at maximum velocity. See the Engineering Section of the catalog for further details.

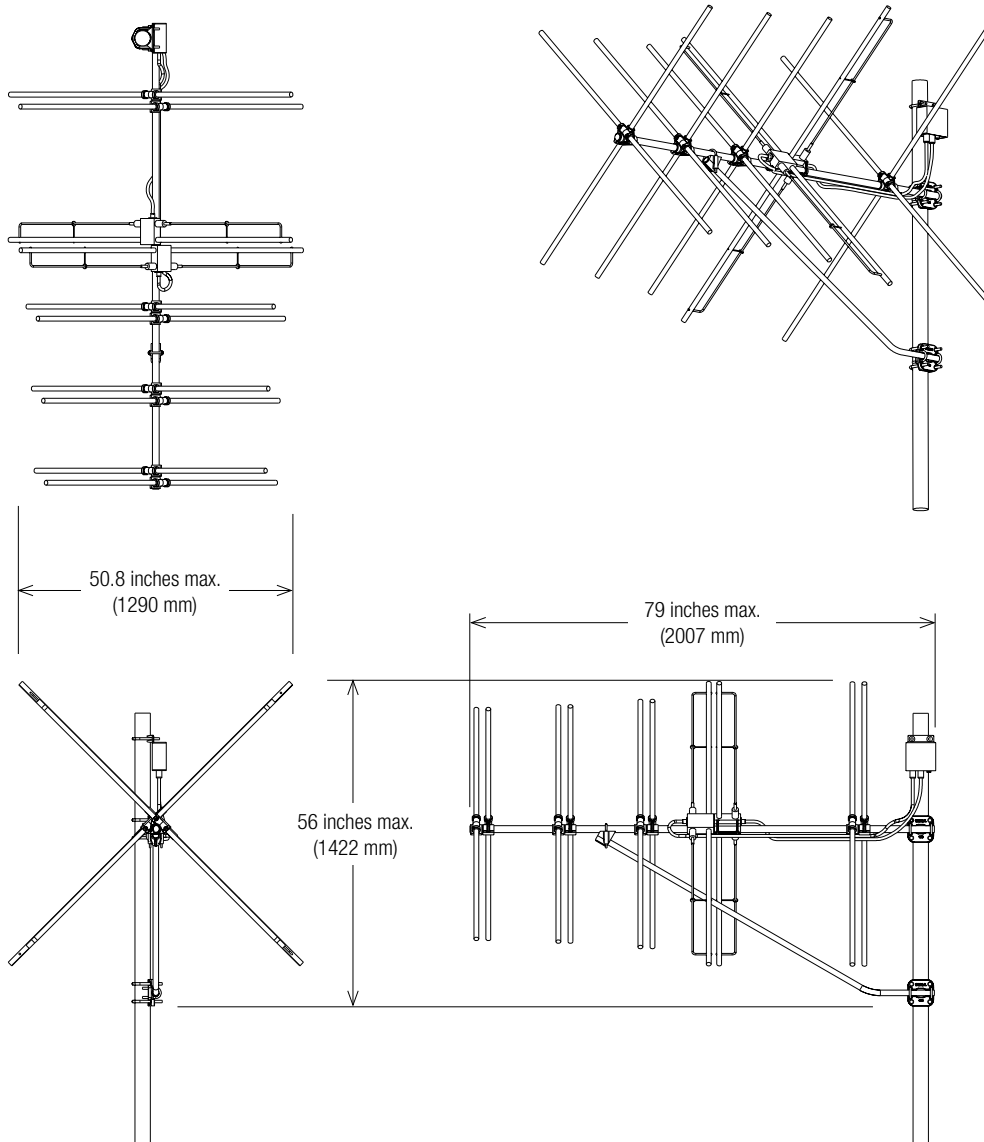
10748d subject to alteration



All specifications are subject to change without notice.
The latest specifications are available at www.kathreinusa.com

CA5-FM/CP/RM
FM Yagi Antenna
88—108 MHz

KATHREIN



10748d subject to alteration